



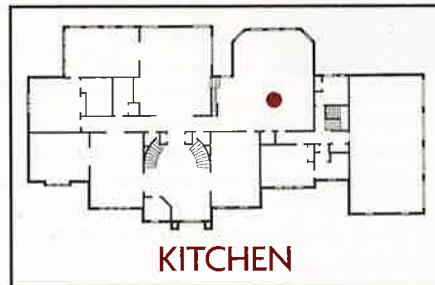
## ULRICH INC.

RIDGEWOOD

The vision for the kitchen was to keep the space airy and open but give it a fresh dose of “today,” says kitchen designer Julia Kleyman of Ulrich.

Working with the existing layout, which included an expansive center island, Kleyman changed cabinetry, hardware and appliances. A soft color palette of sky blue, creamy white and chocolate brown is reflected in paint and fabric and flows beautifully into the adjoining breakfast nook. The lines of the kitchen are sleek, simple and understated. Kitchen cabinetry by Wood-Mode is in creamy white, counters are topped in a striking neutral granite and top-of-the-line appliances in stainless steel are from Electrolux ICON.

“Because the island is so large, we chose lighting fixtures from Circa Lighting to add dimension and depth” the designer says. “Wide, circular drum lighting in polished



KITCHEN

